

## ELEMENTARY SCHOOL COUNSELORS

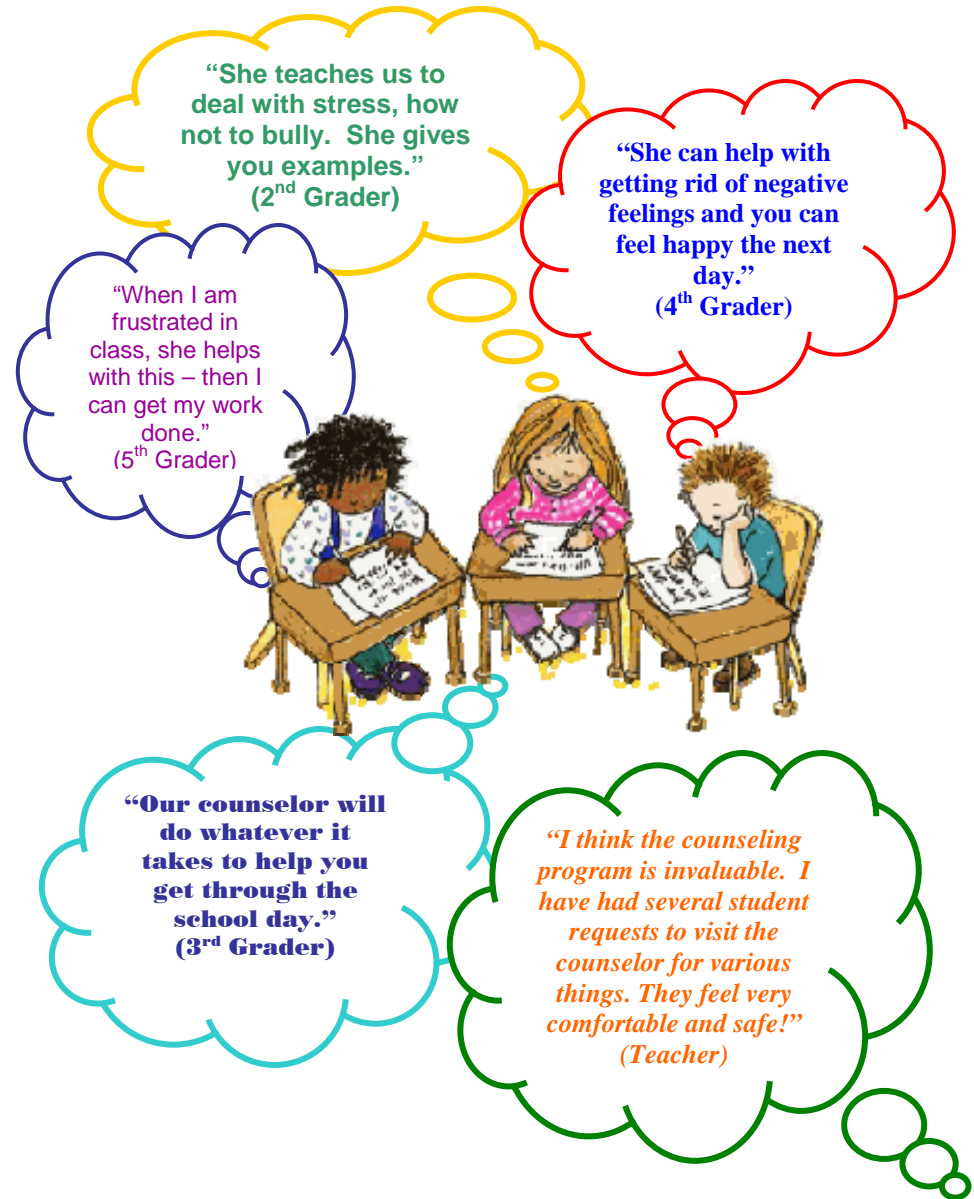
Clearview (743-2241) Mary Jane Brewster  
Discovery (251-7770) Amy O'Hare/KirstenTatge  
Kennedy (363-7791) Amy O'Hare  
Lincoln (251-6343) Sara Bruhn  
Madison (252-4665) Teresa Szymanski  
Oak Hill (251-7936) Nancy Streng  
Talahi (251-7551) Kirsten Tatge  
Westwood (253-1350) Kim Brown

### STUDENTS CAN TRUST THEIR SCHOOL COUNSELORS TO----

Listen...  
Help...  
Understand...  
Accept...



WHATEVER THEY MAY BE FACING...  
GOOD OR BAD.



## ELEMENTARY SCHOOL COUNSELING PROGRAM

## ST. CLOUD AREA SCHOOLS, DISTRICT 742

# Mission Statement

The mission of District 742's Elementary Counseling Program is to empower all students to acquire educational, occupational, and social/emotional competencies necessary to live and contribute in a changing and diverse society while celebrating individual differences.

## IMPACT OF ELEMENTARY COUNSELORS IN 742 SCHOOLS:

- Positive impact on student behavior in school buildings
- Students feel more valued and supported
- Positive impact on student attendance and achievement

## SOME ISSUES INCLUDE:

- Academic Skills/Support
- Anger Management
- Bullying/Harassment
- Character Education
- Communication/Social Skills
- Decision Making
- Depression/Anxiety
- Family Change
- Grief/Loss
- Military Deployment
- Neglect/Abuse
- Peer Relationships
- Self-Esteem/Support



*"Something will happen and you don't know how your child will react to it, because it has never happened before. I think it is good for a child to talk to a counselor, a third person--to hear that it will be okay. It happens to other kids; you're not the only one."*

*-----Parent*

## Students, Parents and Staff Can Count on Elementary Counselors to:

- ❖ Be active and visible in the school community
- ❖ Do "Check-ins" with students at beginnings and ends of days
- ❖ Counsel students individually or in groups as needed
- ❖ Participate in staff development
- ❖ Help students make transitions in or out of school
- ❖ Build students' skills in classroom lessons
- ❖ Be involved with school-wide student intervention teams/efforts
- ❖ Collaborate with staff and parents/families
- ❖ Promote and advocate for student mental health
- ❖ Consult with district and community mental health professionals
- ❖ Coordinate services with outside agencies

## IT ONLY TAKES...

One thought  
One Look  
One Word  
One Smile  
One Person  
One Second

## TO CHANGE A LIFE

*(Author Unknown)*

