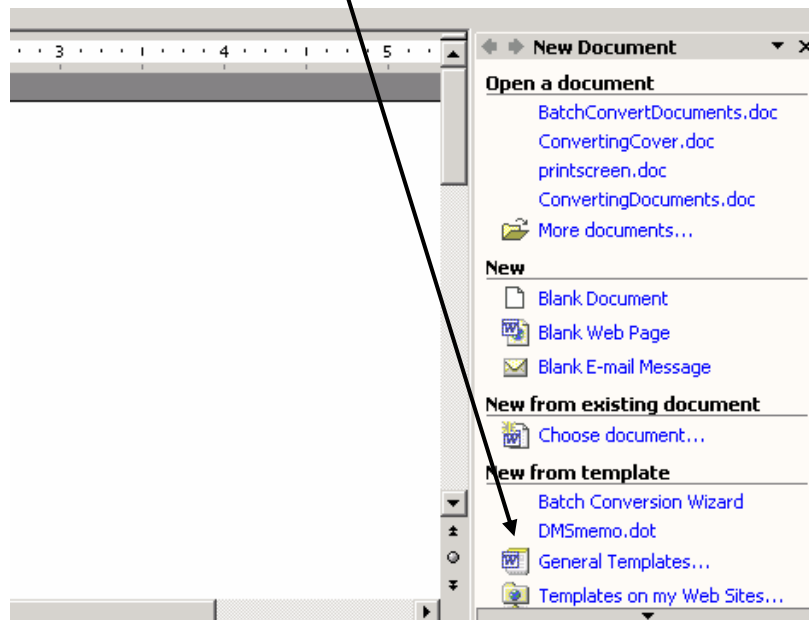


Corel WordPerfect to Microsoft Word

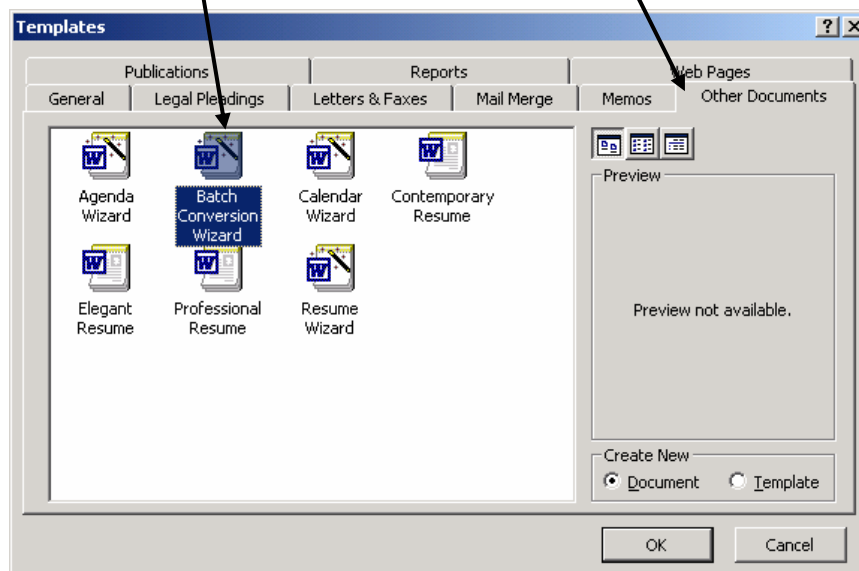
Batch Convert Word Processing Documents

You can convert multiple WordPerfect documents into Word documents using a built-in Batch Conversion Wizard.

1. Launch Microsoft Word. Click **File/New**. The **New Document** task pane will appear.
2. Under **New from template**, click **General templates**. The **Templates** dialog box will appear.



3. Click the **Other Documents** tab.
4. Double-click the **Batch Conversion Wizard**.



5. Follow the wizard's on-screen directions.