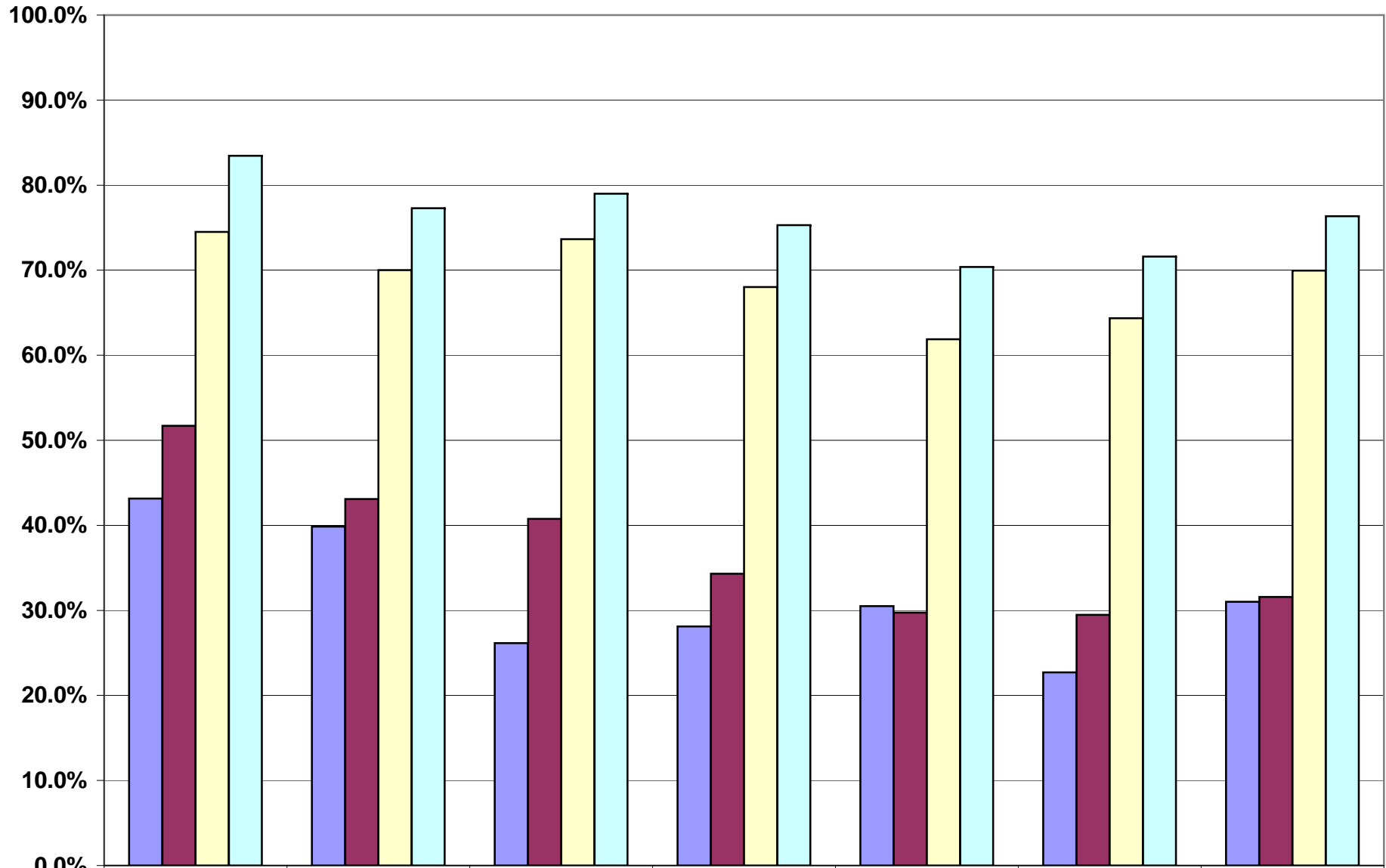


2008 Reading % Proficient by Special Ed Status



	3	4	5	6	7	8	10
District 742 Special Ed	43.2%	39.8%	26.2%	28.1%	30.5%	22.7%	31.0%
State Special Ed	51.7%	43.1%	40.8%	34.3%	29.7%	29.5%	31.6%
742 Non Special Ed	74.5%	70.0%	73.7%	68.0%	61.9%	64.4%	70.0%
State Non Special Ed	83.5%	77.3%	79.0%	75.3%	70.4%	71.6%	76.4%

■ District 742 Special Ed
 ■ State Special Ed
 ■ 742 Non Special Ed
 ■ State Non Special Ed