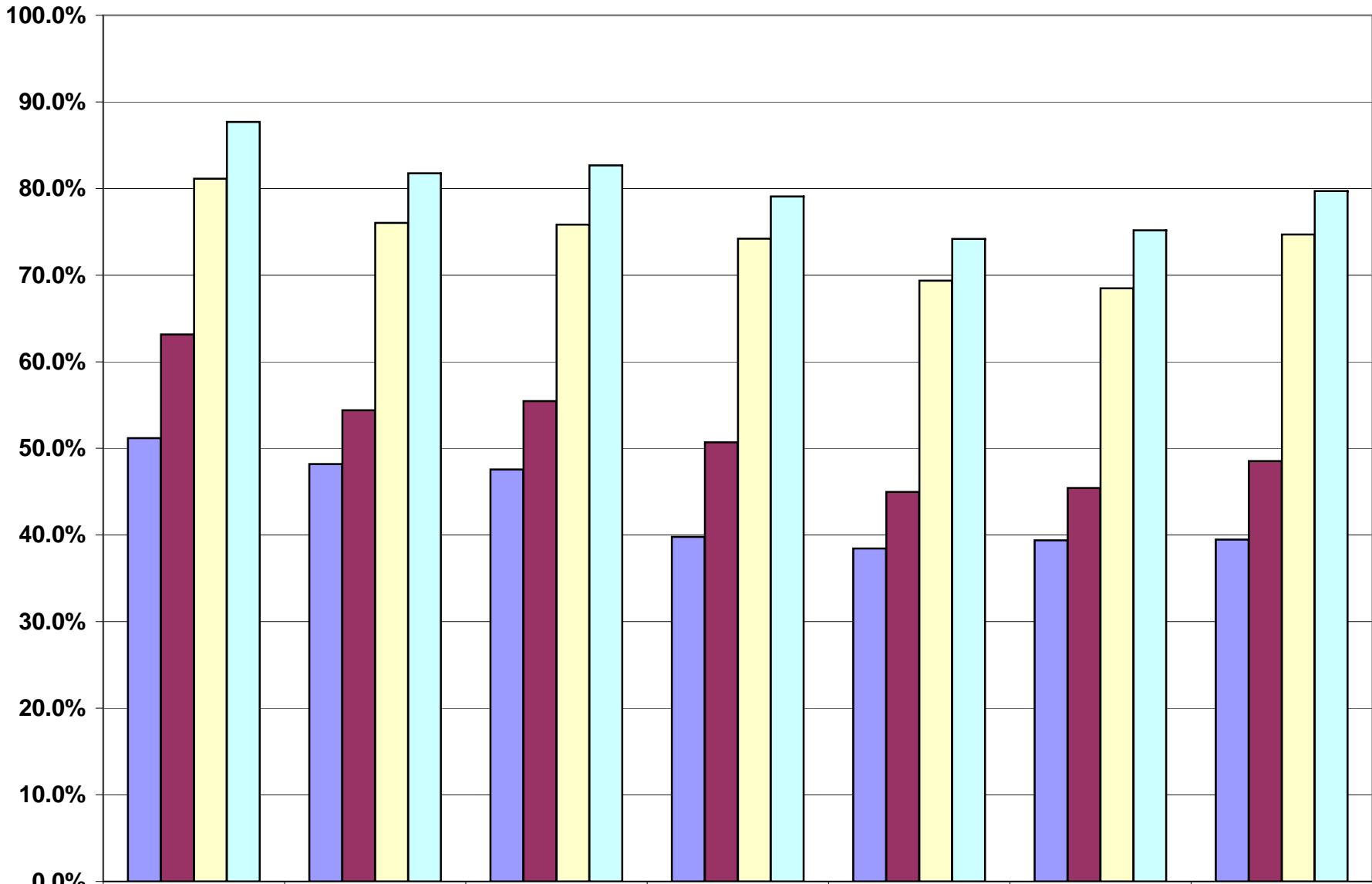


2008 Reading % Proficient by Lunch Status



	3	4	5	6	7	8	10
District 742 Free/Reduced	51.2%	48.2%	47.6%	39.8%	38.4%	39.4%	39.5%
State Free/Reduced	63.1%	54.4%	55.5%	50.7%	45.0%	45.4%	48.5%
742 Non Free/Reduced	81.1%	76.0%	75.8%	74.2%	69.4%	68.5%	74.7%
State Non Free/Reduced	87.7%	81.8%	82.7%	79.1%	74.2%	75.2%	79.7%

■ District 742 Free/Reduced
 ■ State Free/Reduced
 ■ 742 Non Free/Reduced
 ■ State Non Free/Reduced