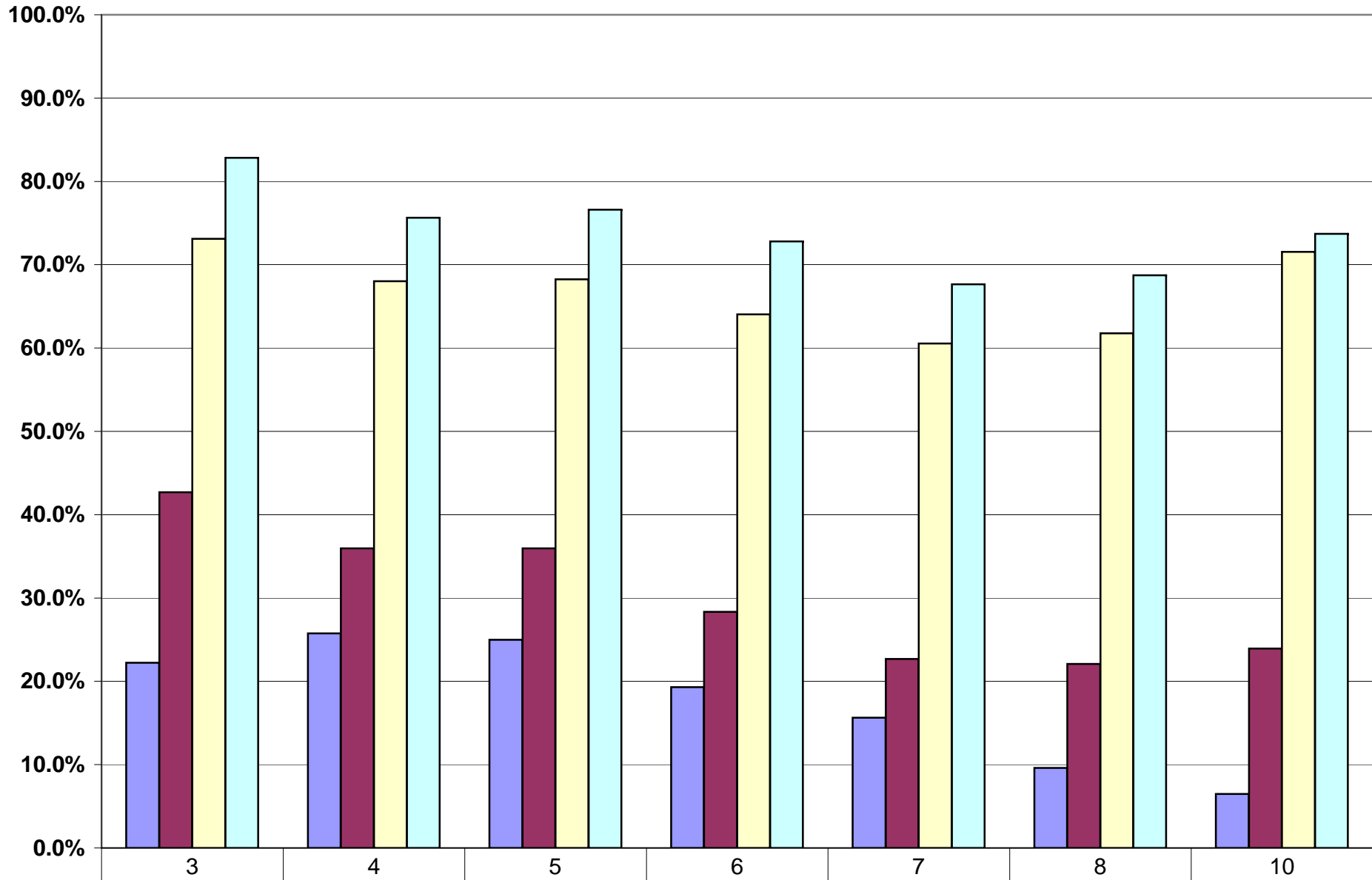


2008 Reading % Proficient by LEP Status



	3	4	5	6	7	8	10
District 742 LEP	22.2%	25.8%	25.0%	19.3%	15.6%	9.6%	6.5%
State LEP	42.7%	36.0%	36.0%	28.3%	22.7%	22.1%	23.9%
District 742 Non LEP	73.1%	68.0%	68.3%	64.1%	60.5%	61.8%	71.6%
State Non LEP	82.8%	75.7%	76.6%	72.8%	67.7%	68.7%	73.7%

■ District 742 LEP
 ■ State LEP
 ■ District 742 Non LEP
 ■ State Non LEP