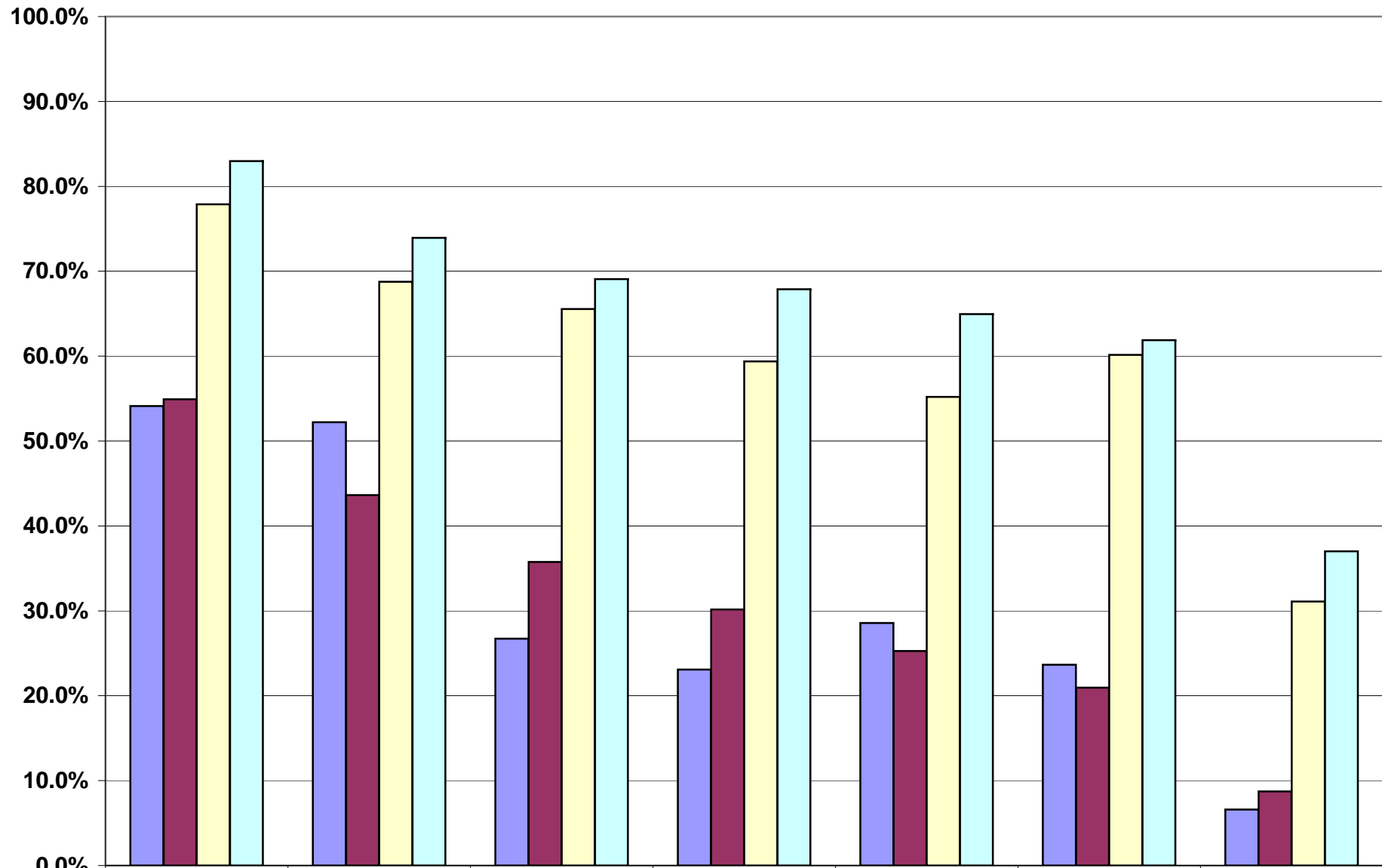


2008 Math % Proficient by Special Ed Status



	3	4	5	6	7	8	11
District 742 Special Ed	54.1%	52.2%	26.7%	23.1%	28.6%	23.6%	6.6%
State Special Ed	54.9%	43.6%	35.8%	30.2%	25.3%	21.0%	8.7%
742 Non Special Ed	77.9%	68.8%	65.5%	59.4%	55.2%	60.2%	31.1%
State Non Special Ed	83.0%	73.9%	69.1%	67.9%	65.0%	61.9%	37.0%

■ District 742 Special Ed
 ■ State Special Ed
 ■ 742 Non Special Ed
 ■ State Non Special Ed