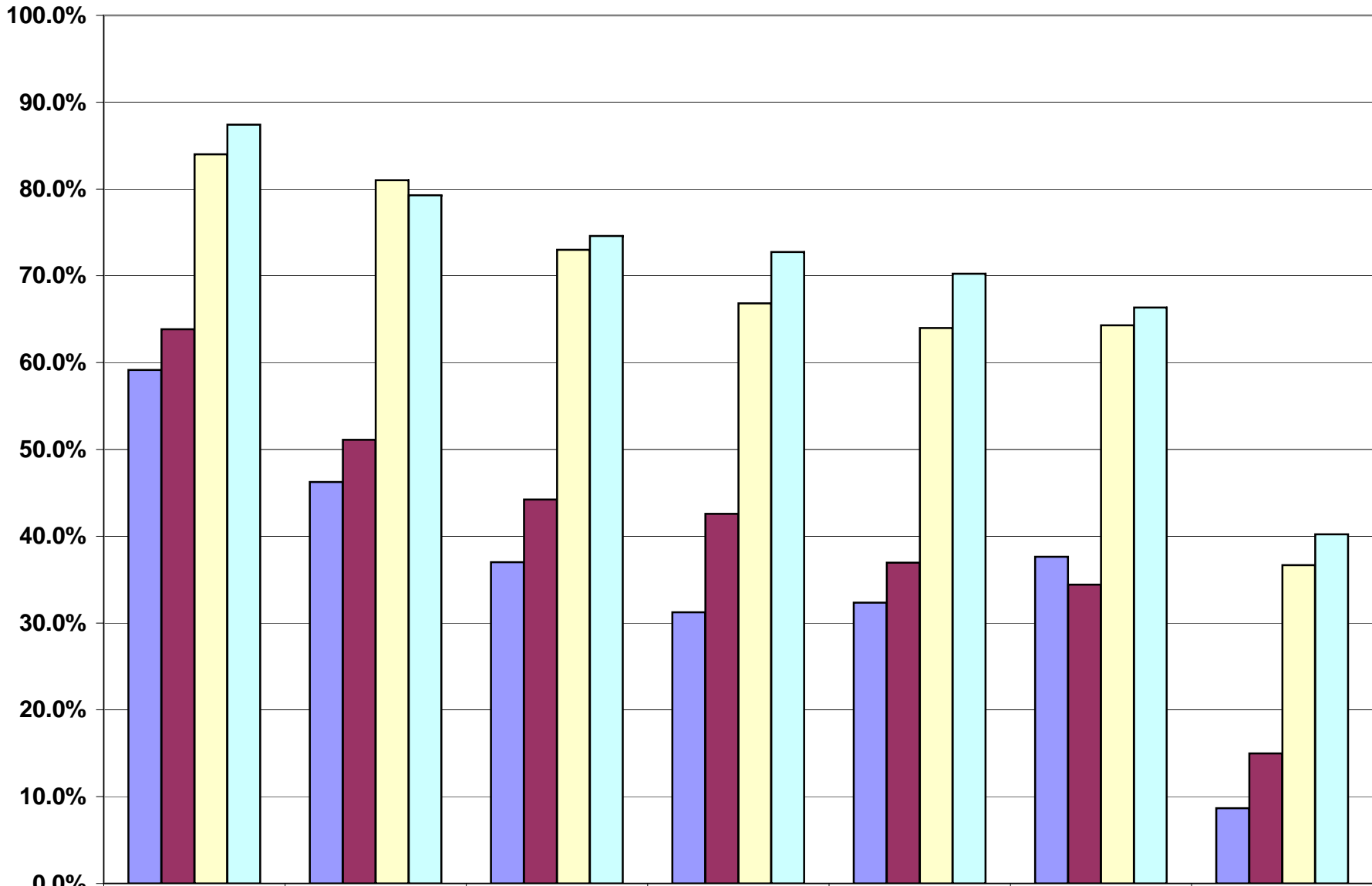


2008 Math % Proficient by Lunch Status



District 742 Free/Reduced	59.1%	46.3%	37.0%	31.2%	32.4%	37.6%	8.7%
State Free/Reduced	63.8%	51.1%	44.2%	42.6%	36.9%	34.4%	15.0%
742 Non Free/Reduced	84.0%	81.0%	73.0%	66.8%	64.0%	64.3%	36.7%
State Non Free/Reduced	87.4%	79.3%	74.6%	72.8%	70.3%	66.3%	40.2%

District 742 Free/Reduced State Free/Reduced 742 Non Free/Reduced State Non Free/Reduced