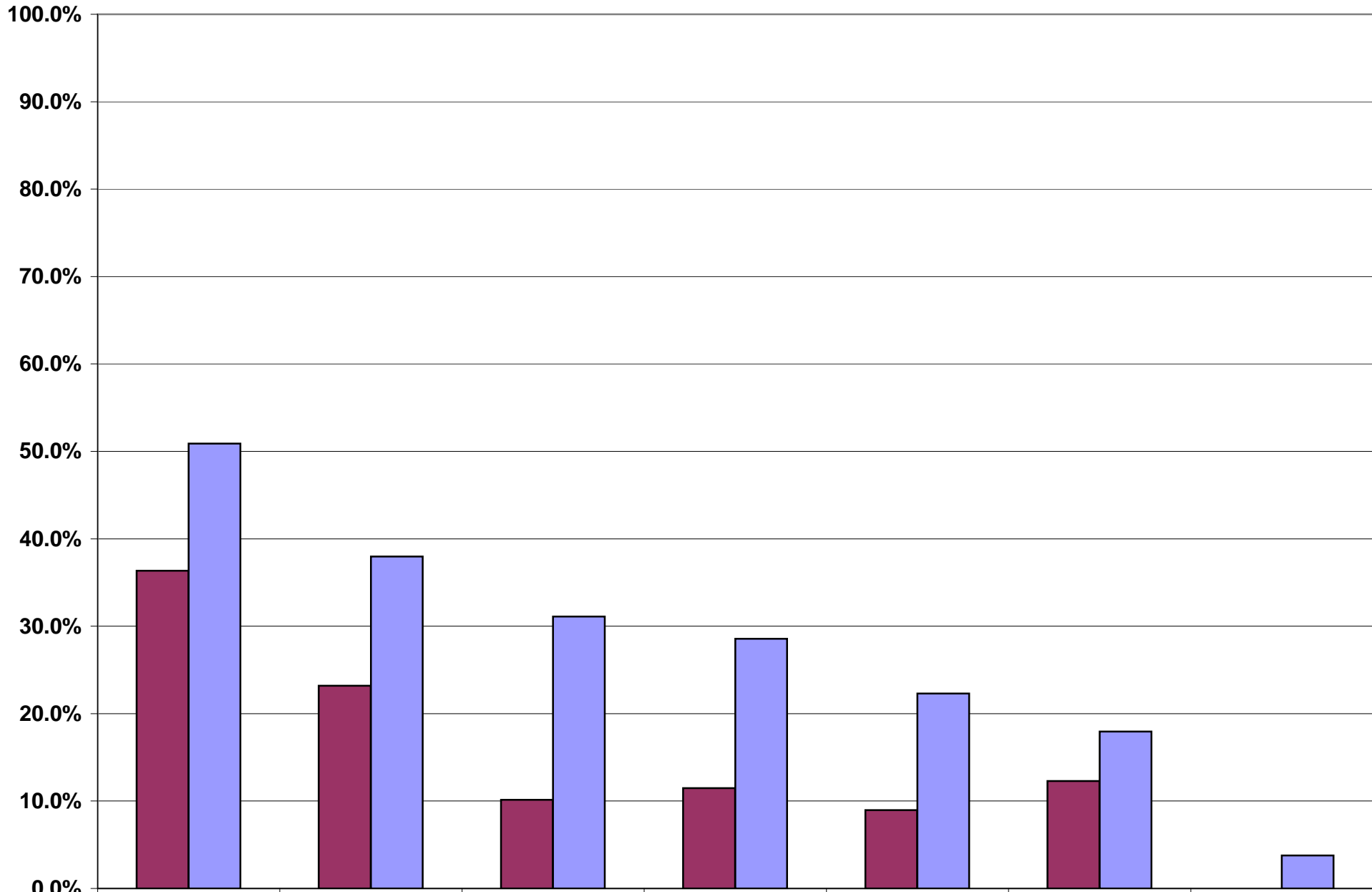


2008 Math % Proficient by LEP Status



	3	4	5	6	7	8	11
District 742 LEP	36.4%	23.2%	10.1%	11.5%	9.0%	12.3%	0.0%
State LEP	50.9%	38.0%	31.1%	28.6%	22.3%	18.0%	3.8%

District 742 LEP
  State LEP