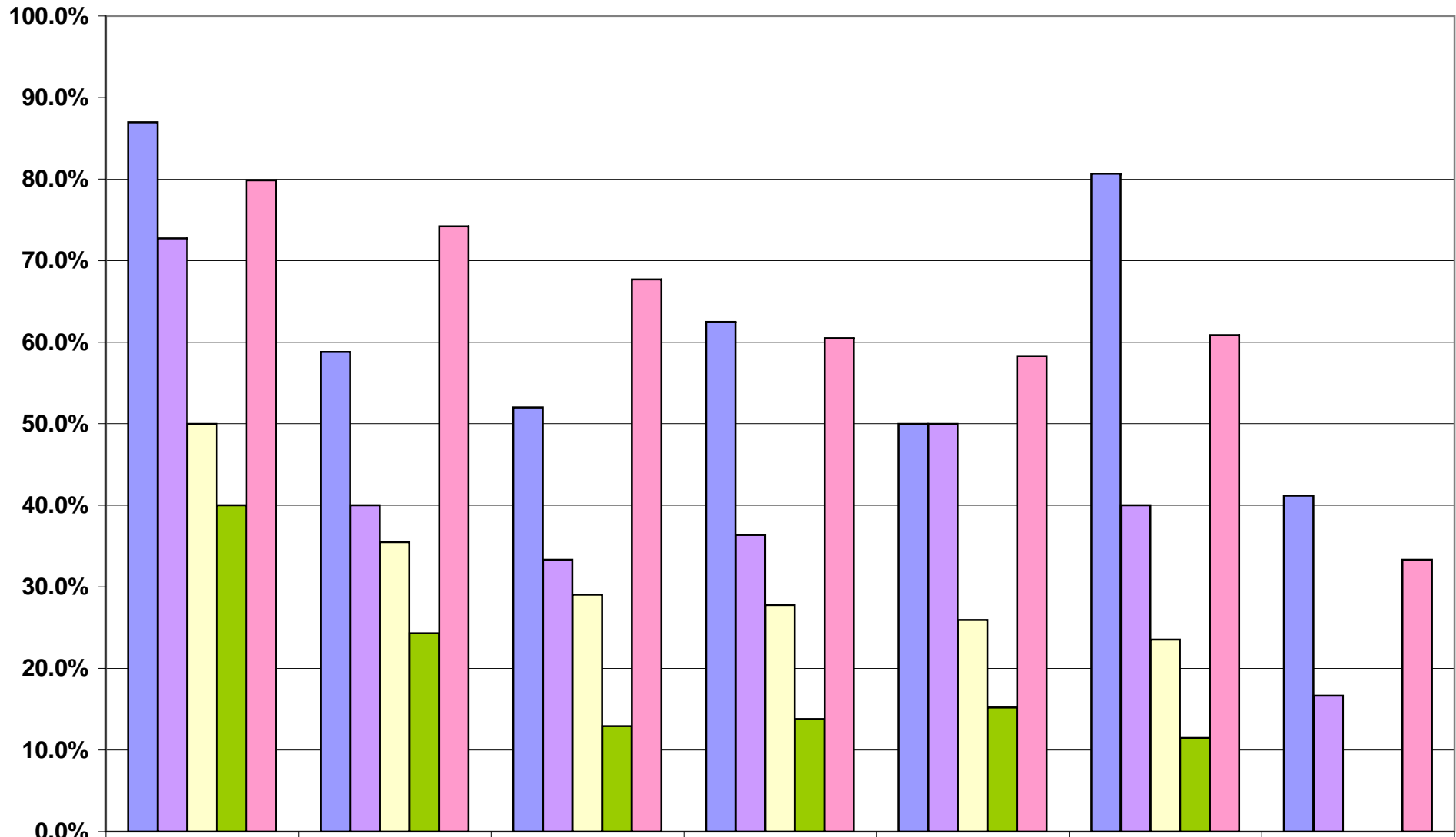


2008 Math % Proficient By Ethnicity



	3	4	5	6	7	8	11
Asian/PI	87.0%	58.8%	52.0%	62.5%	50.0%	80.7%	41.2%
American Indian	72.7%	40.0%	33.3%	36.4%	50.0%	40.0%	16.7%
Hispanic	50.0%	35.5%	29.0%	27.8%	25.9%	23.5%	0.0%
Black	40.0%	24.3%	12.9%	13.8%	15.2%	11.5%	0.0%
White	79.8%	74.2%	67.7%	60.5%	58.3%	60.9%	33.3%

