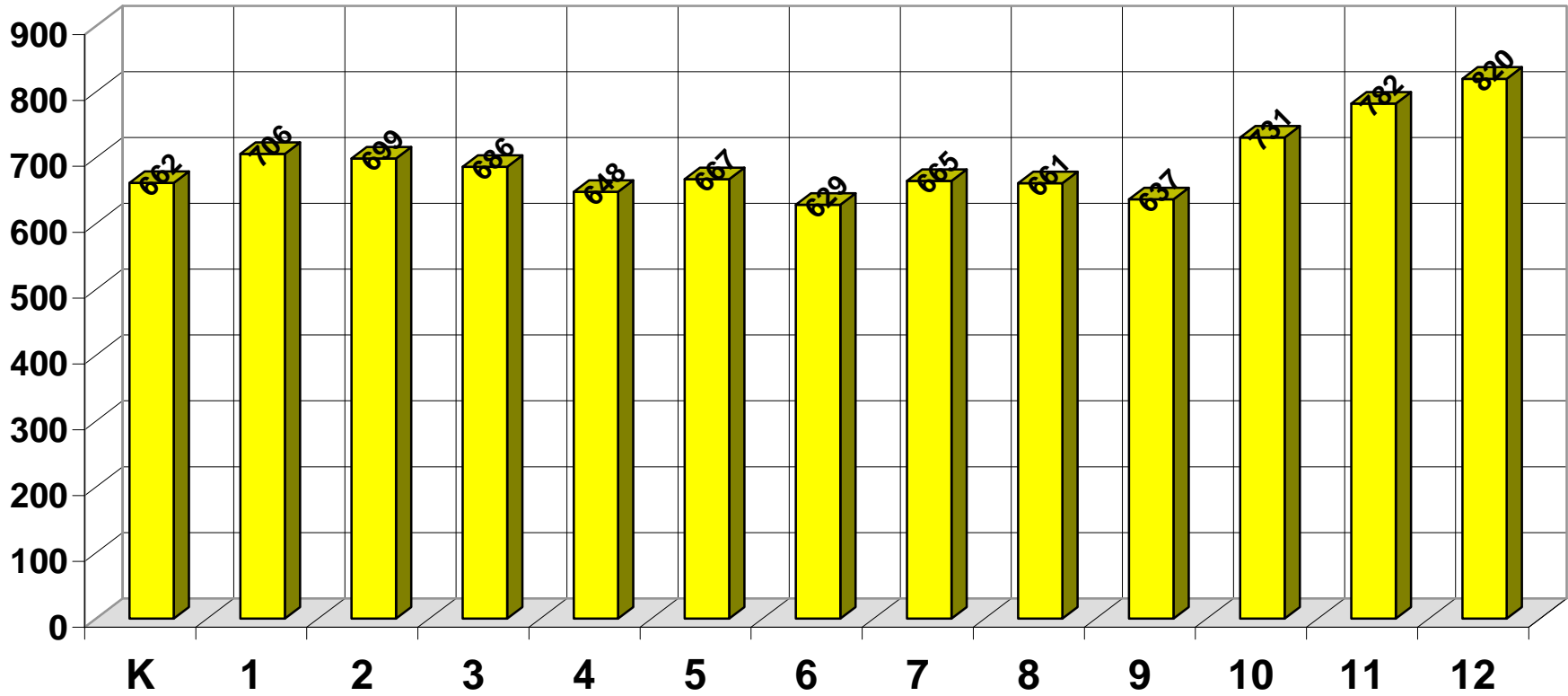


	A	B	C	D	E	F	G	H	I	J	K	L	M	N	O	P	Q	R	S	T	
1	742						ENHIST DATA of SchoolFinances.com							Kevin Januszewski							
2	73	56303	55319	56387	56374	56304	56301	0	0	0	0	0	0	0	0	0	0	0	0	0	
3	<b>Adjusted ADM at 1.5 Max. Residents Attending, Residents Tuition Out and Non-Residents Option IN</b>																				
4	<b>742</b>																				
5	<b>Adjusted Average Daily Membership (Adj ADM)</b>																				
6	Dist. #	Year	PK	HK	KG	1	2	3	4	5	6	7	8	9	10	11	12	Total PK-12	Total K-12	Data Error	
7	742	96-97	112.96	42.95	686.72	783.37	787.08	778.24	817.25	840.97	906.51	988.5	952.7	933.78	916.54	885.07	834.78	11267.42	11154.46		
8	742	97-98	119.93	46.93	649.16	778.49	807.53	773.17	781.39	798.21	835.7	950.27	989.06	994.55	960.5	901.23	895.55	11281.67	11161.74		
9	742	98-99	114.21	44.93	643.88	736.4	779.09	786.88	756.47	785.49	802.37	875.45	960.35	994.53	953.84	918.19	904.87	11056.95	10942.74		
10	742	99-00	101	49.35	633.85	714.54	738.48	768.5	770.61	781.39	801.49	838.59	881.97	965.55	987.43	983.6	892.42	10908.77	10807.77		
11	742	00-01	84.17	44.65	557.46	741.92	695.51	723.48	764.55	783.77	781.11	822.22	848.23	894.26	975.45	982.17	947.43	10646.38	10562.21		
12	742	01-02'	86.47	41.02	638.31	644.91	750.2	719.66	717.45	773.01	781.38	806.07	818.61	836.04	950.9	1004.63	968.09	10536.75	10450.28		
13	742	02-03'	85.43	66.06	606.22	710.2	630.36	746.4	718.61	713.99	757.29	806.03	807.21	831.69	848.97	981.27	1033.73	10343.46	10258.03		
14	742	03-04'	91.03	62.77	593.64	669.29	674.96	598.6	714.84	679.93	663.14	741.22	766.67	787.09	816.8	835.37	953.99	9649.34	9558.31		
15	742	04-05'	89.97	76.92	601.14	646.89	661.06	685.89	588.34	706.12	670.32	685.91	759.11	802.76	777.95	817.85	870.89	9441.12	9351.15		
16	742	05-06'	94.22	38.06	605.57	679.72	618.06	647.33	671.07	570.00	696.23	709.46	691.12	799.83	821.15	834.65	844.17	9320.64	9226.42		
17	742	06-07	91.47	49.93	629.09	659.91	667.46	614.15	640.03	671.52	592.81	738.46	712.38	752.14	807.26	835.43	895.97	9358.01	9266.54		
18	742	07-08	98.16	49.45	617.64	687.31	646.45	672.34	627.85	644.22	666.59	633.32	749.25	753.59	741.43	827.83	878.69	9294.12	9195.96		
19	742	08-09	92.00	62.00	626.00	712.00	687.00	651.00	671.00	630.00	641.00	663.00	616.00	730.00	757.00	779.00	883.00	9200.00	9108.00		
20																					
21																					
22	<b>Taken from the Gender-Ethnicity byGrade by District File of the MDE (GEGD)</b>																				
23	<b>742</b>																				
24	<b>Fall Enrollment (Seat Count)</b>																				
25	Dist #	Year	1	2	3	4	5	6	7	8	9	10	11	12	K	PK	Total PK-12	Total K-12	Data Error		
26	742	96-97	785	787	773	823	841	904	990	961	942	932	925	972	762	233	11630.0	11397.0			
27	742	97-98	772	806	771	773	796	826	947	971	953	904	840	788	737	199	11083.0	10884.0			
28	742	98-99	725	769	777	738	771	790	857	938	977	929	866	791	710	207	10845.0	10638.0			
29	742	99-00	704	722	753	747	744	779	822	866	962	985	977	1032	728	194	11015.0	10821.0			
30	742	00-01	726	681	707	741	745	761	808	836	892	1007	974	1122	644	165	10809.0	10644.0			
31	742	01-02'	617	719	691	687	740	741	789	793	837	943	1008	1049	708	164	10486.0	10322.0			
32	742	02-03'	696	596	727	699	684	732	797	791	834	835	967	1091	680	163	10292.0	10129.0			
33	742	03-04'	670	660	596	709	672	669	744	770	811	828	841	1039	658	166	9833.0	9667.0			
34	742	04-05'	644	662	682	589	710	677	690	776	808	807	833	950	702	169	9699.0	9530.0			
35	742	05-06'	677	617	644	663	564	693	705	690	781	819	845	931	673	194	9496.0	9302.0			
36	742	06-07	650	665	613	636	669	601	739	722	753	836	838	949	713	173	9557.0	9384.0			
37	742	07-08	687	650	675	634	649	664	634	752	773	748	834	962	716	182	9560.0	9378.0			
38	742	08-09	704	660	648	654	605	644	695	637	730	747	739	922	743	182	9310.0	9128.0			

# ENROLLMENT BY GRADE FOR 1ST PROJECTION YEAR 2009-10



# MIGRATION

**MIGRATION is enrollment moving into or out of a district for ANY REASON.**

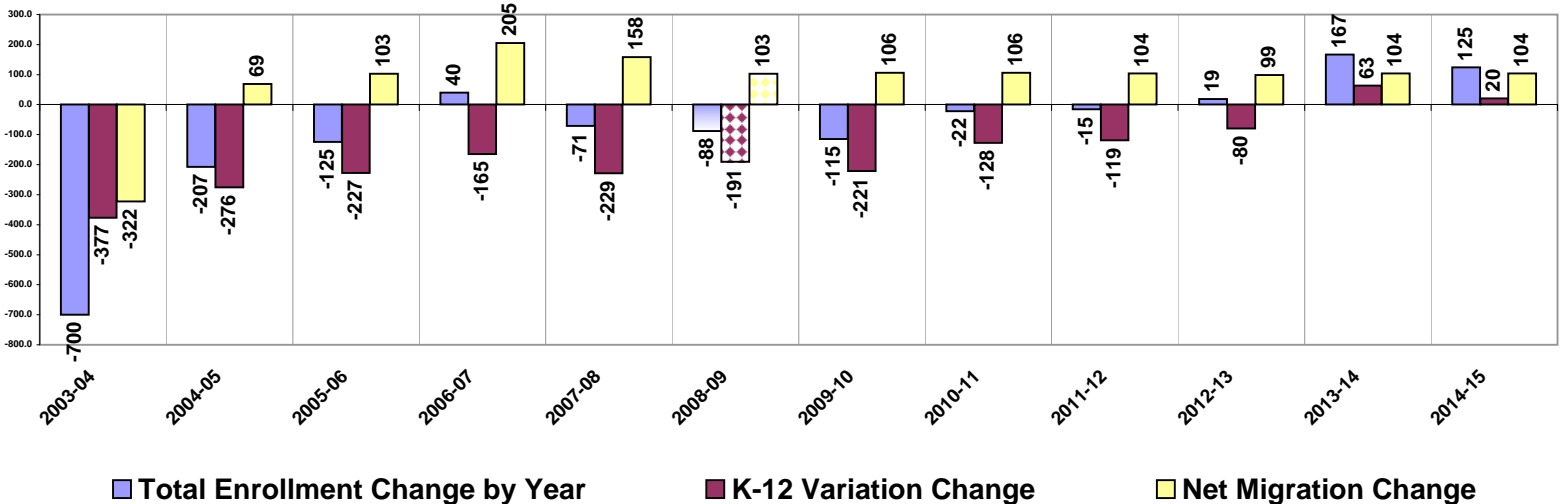
This MIGRATION analysis examines the enrollment that is realized in each grade versus the enrollment in the preceding year in the previous grade. If the succeeding grade enrollment is higher there is a positive migration at that grade level. If the succeeding grade enrollment is lower there is a negative migration.

	Enrollment History							Enrollment Projections						
	2002-03	2003-04	2004-05	2005-06	2006-07	2007-08	2008-09	2009-10	2010-11	2011-12	2012-13	2013-14	2014-15	
K	672.3	656.4	678.1	643.6	679.0	667.1	688.0	661.7	692.4	704.4	715.3	756.8	765.4	
1	710.2	669.3	646.9	679.7	659.9	687.3	712.0	705.7	678.7	710.2	722.6	733.7	776.3	
2	630.4	675.0	661.1	618.1	667.5	646.5	687.0	699.0	692.8	666.3	697.2	709.3	720.2	
3	746.4	598.6	685.9	647.3	614.2	672.3	651.0	686.1	698.1	691.9	665.4	696.3	708.4	
4	718.6	714.8	588.3	671.1	640.0	627.9	671.0	648.3	683.3	695.2	689.0	662.7	693.4	
5	714.0	679.9	706.1	570.0	671.5	644.2	630.0	667.3	644.7	679.5	691.3	685.2	659.0	
6	757.3	663.1	670.3	696.2	592.8	666.6	641.0	628.6	665.8	643.3	678.0	689.8	683.6	
7	806.0	741.2	685.9	709.5	738.5	633.3	663.0	664.6	651.7	690.3	667.0	703.0	715.2	
8	807.2	766.7	759.1	691.1	712.4	749.3	616.0	661.3	663.0	650.1	688.6	665.3	701.2	
9	831.7	787.1	802.8	799.8	752.1	753.6	730.0	637.1	684.0	685.7	672.4	712.2	688.1	
10	849.0	816.8	778.0	821.2	807.3	741.4	757.0	730.7	637.7	684.6	686.3	673.0	712.9	
11	981.3	835.4	817.9	834.7	835.4	827.8	779.0	782.5	755.3	659.1	707.7	709.4	695.7	
12	1033.7	954.0	870.9	844.2	896.0	878.7	883.0	820.0	823.7	795.1	693.9	745.0	746.8	
<b>K-12</b>	<b>10258.0</b>	<b>9558.3</b>	<b>9351.2</b>	<b>9226.4</b>	<b>9266.5</b>	<b>9196.0</b>	<b>9108.0</b>	<b>8992.9</b>	<b>8971.1</b>	<b>8955.7</b>	<b>8974.6</b>	<b>9141.6</b>	<b>9266.2</b>	
<b>K-12 Change</b>		<b>(699.7)</b>	<b>(207.2)</b>	<b>(124.7)</b>	<b>40.1</b>	<b>(70.6)</b>	<b>(88.0)</b>	<b>(115.1)</b>	<b>(21.8)</b>	<b>(15.4)</b>	<b>18.9</b>	<b>167.0</b>	<b>124.6</b>	
<b>% Enrollment Change</b>		<b>-6.82%</b>	<b>-2.17%</b>	<b>-1.33%</b>	<b>0.43%</b>	<b>-0.76%</b>	<b>-0.96%</b>	<b>-1.26%</b>	<b>-0.24%</b>	<b>-0.17%</b>	<b>0.21%</b>	<b>1.86%</b>	<b>1.36%</b>	

A review of the data in the table below will provide information about the enrollment migration by Grade in prior years and the migration that is anticipated in the projection years.

	Enrollment History							Enrollment Projections						
	2002-03	2003-04	2004-05	2005-06	2006-07	2007-08	2008-09	2009-10	2010-11	2011-12	2012-13	2013-14	2014-15	
<b>12 - K</b>		<b>(377.3)</b>	<b>(275.9)</b>	<b>(227.3)</b>	<b>(165.2)</b>	<b>(228.9)</b>	<b>(190.7)</b>	<b>(221.3)</b>	<b>(127.6)</b>	<b>(119.2)</b>	<b>(79.8)</b>	<b>62.9</b>	<b>20.4</b>	
1		<b>(3.0)</b>	<b>(9.5)</b>	<b>1.7</b>	<b>16.3</b>	<b>8.3</b>	<b>44.9</b>	<b>17.7</b>	<b>17.0</b>	<b>17.8</b>	<b>18.1</b>	<b>18.4</b>	<b>19.5</b>	
2		<b>(35.2)</b>	<b>(8.2)</b>	<b>(28.8)</b>	<b>(12.3)</b>	<b>(13.5)</b>	<b>(0.3)</b>	<b>(13.0)</b>	<b>(12.9)</b>	<b>(12.4)</b>	<b>(13.0)</b>	<b>(13.2)</b>	<b>(13.4)</b>	
3		<b>(31.8)</b>	<b>10.9</b>	<b>(13.7)</b>	<b>(3.9)</b>	<b>4.9</b>	<b>4.5</b>	<b>(0.9)</b>	<b>(0.9)</b>	<b>(0.9)</b>	<b>(0.9)</b>	<b>(0.9)</b>	<b>(0.9)</b>	
4		<b>(31.6)</b>	<b>(10.3)</b>	<b>(14.8)</b>	<b>(7.3)</b>	<b>13.7</b>	<b>(1.3)</b>	<b>(2.7)</b>	<b>(2.8)</b>	<b>(2.9)</b>	<b>(2.9)</b>	<b>(2.8)</b>	<b>(2.9)</b>	
5		<b>(38.7)</b>	<b>(8.7)</b>	<b>(18.3)</b>	<b>0.4</b>	<b>4.2</b>	<b>2.1</b>	<b>(3.7)</b>	<b>(3.6)</b>	<b>(3.8)</b>	<b>(3.8)</b>	<b>(3.8)</b>	<b>(3.7)</b>	
6		<b>(50.9)</b>	<b>(9.6)</b>	<b>(9.9)</b>	<b>22.8</b>	<b>(4.9)</b>	<b>(3.2)</b>	<b>(1.4)</b>	<b>(1.5)</b>	<b>(1.5)</b>	<b>(1.6)</b>	<b>(1.6)</b>	<b>(1.6)</b>	
7		<b>(16.1)</b>	<b>22.8</b>	<b>39.1</b>	<b>42.2</b>	<b>40.5</b>	<b>(3.6)</b>	<b>23.6</b>	<b>23.2</b>	<b>24.6</b>	<b>23.7</b>	<b>25.0</b>	<b>25.4</b>	
8		<b>(39.4)</b>	<b>17.9</b>	<b>5.2</b>	<b>2.9</b>	<b>10.8</b>	<b>(17.3)</b>	<b>(1.7)</b>	<b>(1.7)</b>	<b>(1.6)</b>	<b>(1.7)</b>	<b>(1.7)</b>	<b>(1.8)</b>	
9		<b>(20.1)</b>	<b>36.1</b>	<b>40.7</b>	<b>61.0</b>	<b>41.2</b>	<b>(19.3)</b>	<b>21.1</b>	<b>22.6</b>	<b>22.7</b>	<b>22.2</b>	<b>23.6</b>	<b>22.8</b>	
10		<b>(14.9)</b>	<b>(9.1)</b>	<b>18.4</b>	<b>7.4</b>	<b>(10.7)</b>	<b>3.4</b>	<b>0.7</b>	<b>0.6</b>	<b>0.7</b>	<b>0.7</b>	<b>0.7</b>	<b>0.7</b>	
11		<b>(13.6)</b>	<b>1.1</b>	<b>56.7</b>	<b>14.3</b>	<b>20.6</b>	<b>37.6</b>	<b>25.5</b>	<b>24.6</b>	<b>21.4</b>	<b>23.0</b>	<b>23.1</b>	<b>22.6</b>	
12		<b>(27.3)</b>	<b>35.5</b>	<b>26.3</b>	<b>61.3</b>	<b>43.3</b>	<b>55.2</b>	<b>41.0</b>	<b>41.2</b>	<b>39.8</b>	<b>34.7</b>	<b>37.3</b>	<b>37.4</b>	
<b>Total Migration</b>		<b>(322.4)</b>	<b>68.8</b>	<b>102.5</b>	<b>205.3</b>	<b>158.3</b>	<b>102.7</b>	<b>106.2</b>	<b>105.8</b>	<b>103.9</b>	<b>98.7</b>	<b>104.1</b>	<b>104.2</b>	
<b>Total Enrollment Change by Year</b>		<b>(699.7)</b>	<b>(207.2)</b>	<b>(124.7)</b>	<b>40.1</b>	<b>(70.6)</b>	<b>(88.0)</b>	<b>(115.1)</b>	<b>(21.8)</b>	<b>(15.4)</b>	<b>18.9</b>	<b>167.0</b>	<b>124.6</b>	
		<b>2003-04</b>	<b>2004-05</b>	<b>2005-06</b>	<b>2006-07</b>	<b>2007-08</b>	<b>2008-09</b>	<b>2009-10</b>	<b>2010-11</b>	<b>2011-12</b>	<b>2012-13</b>	<b>2013-14</b>	<b>2014-15</b>	

**Enrollment change, Grade 12/K Change and Total Migration**



## ST. CLOUD

742

## Enrollment Projections for Ten Years

*This Ten-Year Enrollment Projection simply uses the Kindergarten data entries and the grade-to-grade progression entries of the selected projection and expands the projections for TEN-YEARS.*

ST. CLOUD	2008-09	2009-10	2010-11	2011-12	2012-13	2013-14	2014-15	2015-16	2016-17	2017-18	2018-19
Kindergarten	688.0	661.7	692.4	704.4	715.3	756.8	765.4	784.7	804.0	823.3	842.6
Grade 1	712.0	705.7	678.7	710.2	722.6	733.7	776.3	785.1	804.9	824.6	844.4
Grade 2	687.0	699.0	692.8	666.3	697.2	709.3	720.2	762.1	770.7	790.1	809.5
Grade 3	651.0	686.1	698.1	691.9	665.4	696.3	708.4	719.3	761.1	769.7	789.1
Grade 4	671.0	648.3	683.3	695.2	689.0	662.7	693.4	705.5	716.3	757.9	766.5
Grade 5	630.0	667.3	644.7	679.5	691.3	685.2	659.0	689.6	701.6	712.4	753.8
Grade 6	641.0	628.6	665.8	643.3	678.0	689.8	683.6	657.5	688.0	700.0	710.8
Grade 7	663.0	664.6	651.7	690.3	667.0	703.0	715.2	708.9	681.8	713.4	725.8
Grade 8	616.0	661.3	663.0	650.1	688.6	665.3	701.2	713.4	707.1	680.1	711.6
Grade 9	730.0	637.1	684.0	685.7	672.4	712.2	688.1	725.2	737.8	731.3	703.3
Grade 10	757.0	730.7	637.7	684.6	686.3	673.0	712.9	688.8	725.9	738.5	732.0
Grade 11	779.0	782.5	755.3	659.1	707.7	709.4	695.7	736.8	711.9	750.3	763.4
Grade 12	883.0	820.0	823.7	795.1	693.9	745.0	746.8	732.3	775.7	749.4	789.9
<b>Total-Graph Below</b>	<b>9108.0</b>	<b>8992.9</b>	<b>8971.1</b>	<b>8955.7</b>	<b>8974.6</b>	<b>9141.6</b>	<b>9266.2</b>	<b>9409.1</b>	<b>9586.7</b>	<b>9741.1</b>	<b>9942.7</b>
<b>Change</b>		<b>(115.1)</b>	<b>(21.8)</b>	<b>(15.4)</b>	18.9	167.0	124.6	142.9	177.6	154.4	201.6
<b>% Change</b>		<b>-1.26%</b>	<b>-0.24%</b>	<b>-0.17%</b>	0.21%	1.86%	1.36%	1.54%	1.89%	1.61%	2.07%
Grade 12 to K Change		-221.3	-127.6	-119.2	-79.8	62.9	20.4	37.9	71.7	47.6	93.1
Grade 1-12 Migration		106.2	105.8	103.9	98.7	104.1	104.2	105.0	106.0	106.8	108.5

### Ten Year Enrollment Projections Using the District Data and Selections

*Wt Ratio 6 Yrs*

Ten Year Enrollment Projection Graph

